

CLARKE®



HEAD-TORCH

MODEL NO: HL400R

PART NO: 4003543

INSTRUCTIONS FOR USE

UK
CA | CE



GC07/23

INTRODUCTION

Thank you for purchasing this CLARKE Head-torch. Before attempting to use this product, please read this manual thoroughly and follow the instructions carefully. In doing so you will ensure the safety of yourself and that of others around you and you can look forward to your purchase giving you long and satisfactory service.

PRODUCT OVERVIEW

This hands-free 5W COB LED head-torch with 40° angle adjustment and dimmer switch allows brightness to be adjusted from 20% to 100%.

The main light has one switch with four functions;- On, Flash, Auto-sensor and Off. Hold down the switch to enable the auto sensor function which will allow turning on/off just by waving a hand in front of the sensor.

The rear of the strap includes a red LED warning light which has two functions;- Flash or On, making it an ideal cycling light.

The adjustable headband has a foam brow for added comfort. It includes a battery charging level indicator powered by a rechargeable 3.7V 2.2Ah Li-ion battery and supplied with a micro USB charging lead.

SPECIFICATIONS

Model	HL400R
Operating voltages	3.7V Light - 5V USB
LED Wattage consumption	5W max
Rechargeable Lithium battery	2200mAh
Lighting source	1 x 5W LED
Light output (luminous flux)	400 LM
Colour temperature	6000-6800K
Ingress Protection (IP rating)	IP20
Battery charging time	2 hours
Approximate Run Time	High 2.5 Hours / Low 8.5 hours
Rated lamp lifetime	30,000 hours
Efficiency	80 Lm/W
Operating temperatures	0 to +45°C
Dimensions	50 x 200 x 200mm
Weight	200 g

GENERAL SAFETY PRECAUTIONS

Please read and understand the following instructions before use.

1. **DO NOT** shine directly into your own, another person's or an animal's eyes.
2. **DO NOT** allow children to use the head torch.
3. **DO NOT** use the torch if you suspect that the battery or the torch casing is damaged.
4. **DO NOT** leave batteries in a discharged state. Before long term storage remove batteries.
5. **DO NOT** attempt to open the batteries.
6. **DO NOT** crush, puncture, short contacts or dispose of in fire or water.
7. Replace only with the batteries designed for this product.
8. If the electrolyte in the batteries gets on your skin, thoroughly rinse with water. If it gets in your eyes, rinse thoroughly with cool water and seek immediate medical attention.
9. **DO NOT** use the headtorch during recharging.
10. Inspect the charger cable and connector for damage to ensure items are safe before connecting to the mains power supply. **DO NOT** use if damaged.

ENVIRONMENTAL RECYCLING POLICY



Through purchase of this product, the customer is taking on the obligation to deal with the WEEE in accordance with the WEEE regulations in relation to the treatment, recycling & recovery and environmentally sound disposal of the WEEE.

In effect, this means that this product must not be disposed of with general household waste but according to the laws governing Waste Electrical and Electronic Equipment (WEEE) at a recognised disposal facility.

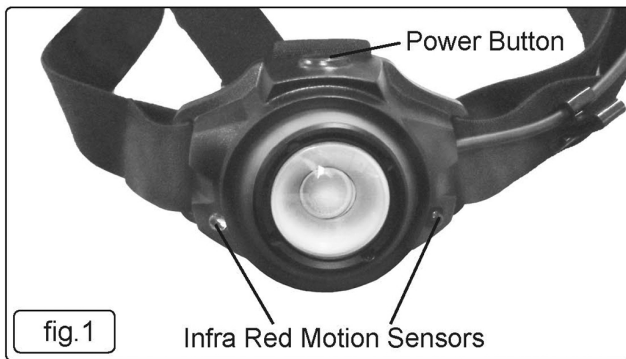
The light source contained in this worklight has a life expectancy of approximately 30000 hours after which the worklight should be disposed of in an environmentally responsible way.

The Lithium Ion battery falls under the Waste Batteries and Accumulators Regulations 2009 and should be disposed of in a controlled manner. Recycle or dispose of used batteries as stipulated by local regulations.

OPERATION

TORCH OPERATION

1. Press the power button (fig.1) once to turn the light on.
2. Press the power button twice (fig.1) to put the light into flashing mode.
3. Press again to turn the unit off.
4. Swivel the lamp by up to 40° to suit the task.

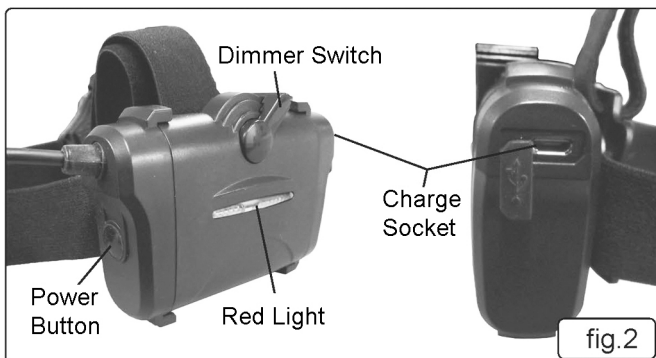


LIGHT SENSOR

1. Press the power button for three seconds until the red LED illuminates.
2. Pass a hand in front of the light until the light comes on.

RED LIGHT ON THE POWER PACK

1. Press the power button on the power pack (fig.2) for 3 seconds for a solid red light. If motion is seen by the sensor the light will turn on.



2. Press the power button twice for a flashing red light.
3. Use the dimmer switch to select high or low illumination.
 - To keep your worklight clean, wipe with a damp cloth only, DO NOT use detergents, chemicals or harmful abrasives. Never immerse in water.

BATTERY CHARGING

1. Connect the USB lead to the port on the rear of the power pack (fig.2) and a USB power socket. Turn on the power supply.
 - During charging the Red LED will be lit. When fully charged the LED will turn green.
 - The worklight should not be operated while charging.
2. If you plan to store the headlight (e.g. for emergencies), we recommend that the battery is fully charged before doing so. Fully charge after each use and after every 3 months. This will ensure the longest possible battery life.
3. NEVER abuse the charger cable or yank the cable to disconnect it. Keep the cable away from sharp edges/hot surfaces.
 - Do not leave the battery in a discharged state. Recharge after use.

GUARANTEE

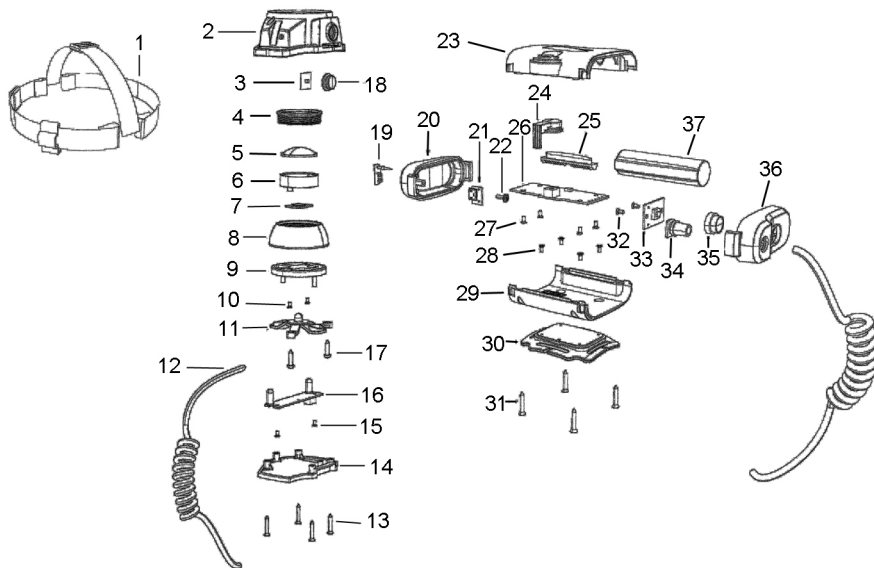
This product is guaranteed against faulty manufacture for a period of 12 months from the date of purchase. Please keep your receipt which will be required as proof of purchase.

This guarantee is invalid if the product is found to have been abused or tampered with in any way, or not used for its intended purpose.

Faulty goods should be returned to their place of purchase, no product can be returned to us without prior permission.

This guarantee does not effect your statutory rights.

COMPONENT PARTS



No	Description
1	Headband
2	Housing
3	Switch
4	LED module
5	Lens
6	Reflector
7	COB LED
8	Module base
9	Rotatable base
10	Screw
11	Fastener
12	Spring cable
13	Screw

No	Description
14	Housing base
15	Screw
16	PCBA
17	Screw
18	Switch cap
19	USB rubber
20	Right battery box
21	USB socket
22	Screw
23	Upper battery box
24	Dimmer controller
25	Red LED light guide
26	PCBA

No	Description
27	Screw
28	Screw
29	Battery box base
30	Headband support
31	Screw
32	Screw
33	Switch-warning light
34	Spring cable clip
35	Switch cap
36	Left battery box
37	Li-ion battery

DECLARATIONS OF CONFORMITY



DECLARATION OF CONFORMITY

Hemmill Street, Epping, Essex, CM16 4LG

This is an important document and should be retained.

We hereby declare that this product(s) complies with the following legislation:

The Batteries and Accumulators (Placing on the Market) Regulations 2008

The Electromagnetic Compatibility Regulations 2016

The Restriction of the Use of Certain Hazardous Substances in Electrical and Electronic Equipment Regulations 2012

The following standards have been applied to the product(s):

IEC 62321-2:2013, IEC 62321-3-1:2013, IEC 62321-4:2013+A1:2017, IEC 62321-5:2013,
IEC 62321-6:2015, IEC 62321-7-1:2015, IEC 62321-7-2:2017, IEC 62321-8:2017, BS EN 61547:2009
BS EN IEC 55015:2019+A11:2020, BS EN IEC 61000-3-2:2019, BS EN 61000-3-3:2013+A1:2019

The technical documentation required to demonstrate that the product(s) meet(s) the requirement(s) of the aforementioned legislation has been compiled and is available for inspection by the relevant enforcement authorities.

The UKCA mark was first applied in: 2023

Product Description: LED Worklight
Model Number(s): HL400R
Serial/Batch Number: Refer to product/packaging label
Date of Issue: 06/07/2023

Signed: 
J.A. Clarke
Director



Fitzwilliam Hall, Fitzwilliam Place, Dublin 2

DECLARATION OF CONFORMITY

This is an important document and should be retained.

We hereby declare that this product(s) complies with the following legislation:

2006/68/EC Battery Directive
2014/30/EU Electromagnetic Compatibility Directive
2011/65/EU Restriction of Hazardous Substances (RoHS) Directive


The following standards have been applied to the product(s):

IEC 62321-2:2013, IEC 62321-3-1:2013, IEC 62321-4:2013+A1:2017, IEC 62321-5:2013,
IEC 62321-6:2015, IEC 62321-7-1:2015, IEC 62321-7-2:2017, IEC 62321-8:2017, EN 61547:2009,
EN IEC 55015:2019+A11:2020, EN IEC 61000-3-2:2019, EN 61000-3-3:2013+A1:2019

The technical documentation required to demonstrate that the product(s) meet(s) the requirements of the aforementioned legislation has been compiled and is available for inspection by the relevant enforcement authorities.

The CE mark was first applied in: 2023

Product Description: LED Worklight
Model Number(s): HL400R
Serial/Batch Number: Refer to product/packaging label
Date of Issue: 06/07/2023

Signed: 
J.A. Clarke
Director

A SELECTION FROM THE VAST RANGE OF

Clarke®

QUALITY PRODUCTS



AIR COMPRESSORS
From DIY to industrial, Plus air tools, spray guns and accessories.

GENERATORS
Prime duty or emergency standby for business, home and leisure.

POWER WASHERS
Hot and cold, electric and engine driven - we have what you need

WELDERS
Mig, Arc, Tig and Spot. From DIY to auto/industrial.

METALWORKING
Drills, grinders and saws for DIY and professional use.

WOODWORKING
Saws, sanders, lathes, mortisers and dust extraction.

HYDRAULICS
Cranes, body repair kits, transmission jacks for all types of workshop use.

WATER PUMPS
Submersible, electric and engine driven for DIY, agriculture and industry.

POWER TOOLS
Angle grinders, cordless drill sets, saws and sanders.

STARTERS/CHARGERS
All sizes for car and commercial use.



PARTS & SERVICE: 0208 988 7400

Parts Enquiries
Parts@clarkeinternational.com

Servicing & Technical Enquiries
Service@clarkeinternational.com

SALES: UK 01992 565333 or Export 00 44 (0)1992 565335

Clarke® INTERNATIONAL Hemnall Street, Epping, Essex CM16 4LG
www.clarkeinternational.com